


NCFE Entry Level 1 Functional Skills Qualification in Mathematics (603/5057/X)

Paper number: Paper 13
Section A: Non-calculator Test



Time allowed: 20 minutes

Learner instructions

- Answer **all** questions.
- Read each question carefully.
- Write your answers in the spaces provided.
- Show your working.
- This shows you where to write your working and answers. 
- Check your work.

Learner information

- The maximum mark for this section is **6**.
- The marks available for **each** question are shown in brackets.

To be completed by the assessor		Mark
A	Activity 1	/ 6

Resources

You will need:

- a pen, with black or blue ink
- a pencil and eraser
- a 30 cm ruler.

Please complete the details below clearly and in BLOCK CAPITALS.

Learner name _____

Centre name _____

Learner number Centre number

Do not turn over until the assessor tells you to do so.

Activity 1: Buying school uniform

Rosie and her mum go shopping.

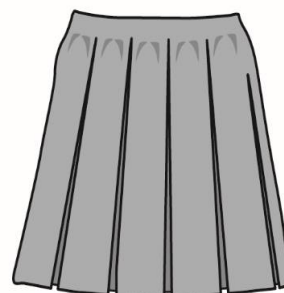
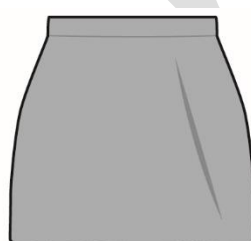
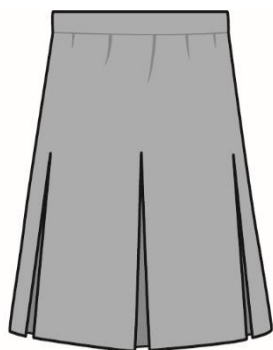
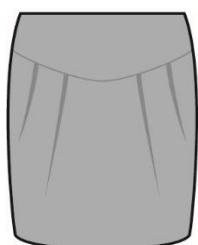
1 (a) Rosie and her mum go shopping for a new school uniform.

Rosie chooses the longest skirt.

Which skirt does she choose?

Tick (✓) your answer.

[1 mark]



A ()

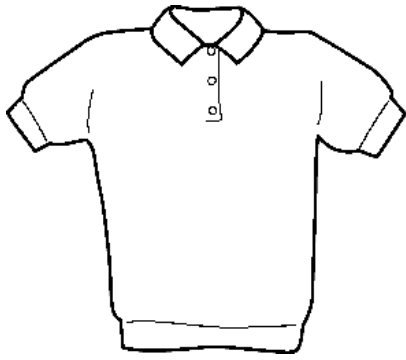
B ()

C ()

D ()

1 (b)

Rosie and her mum buy one shirt and one pair of tights.



£ 13



£ 4

How much do they spend in total?

[2 marks]



Empty rectangular box for writing the answer.

Please turn over

1 (c) Rosie and her mum buy some shoes.

They pay with a £20 note.

Tick (✓) the £20 note.

[1 mark]



1 (d) Rosie and her mum buy a blazer and a tie.

blazer	£15
tie	£4

How do they work out the total price?

Tick (✓) your answer.

[1 mark]

$15 + 4$

$15 - 4$

$4 - 15$

$15 = 4$



A ()

B ()

C ()

D ()

1 (e) Rosie and her mum buy a pack of socks for £11

Write 11 in words.

[1 mark]



[Total marks: 6]

This is the end of Section A.

past paper

bast paper