



**PASS**  
**FUNCTIONAL**  
**SKILLS**

# Functional Skills Model Solutions

[PassFunctionalSkills.co.uk](https://PassFunctionalSkills.co.uk)

[Book Functional Skills Exams](#)

[See our Functional Skills Course](#)

More Free Revision Materials

[Maths Level 2](#)

[Maths Level 1](#)

[English Level 2](#)

[English Level 1](#)

# Functional Skills Mathematics (4748) Entry 3 Sample Assessment



www.cityandguilds.com  
March 2020  
Version 1.0

**Candidate's paper – Calculator allowed**  
On the Farm

**Time allowed – 65 minutes**

Marks: 30

Name: \_\_\_\_\_

City & Guilds Enrolment Number: \_\_\_\_\_

Date of registration: \_\_\_\_\_

Date of assessment: \_\_\_\_\_

**You will need**

- a calculator
- a pen with black or blue ink
- a pencil
- a rubber
- a ruler.



You may use a dictionary.

**Instructions**

- Read each question carefully.
- Answer **all** the questions.

**Candidate's declaration:**

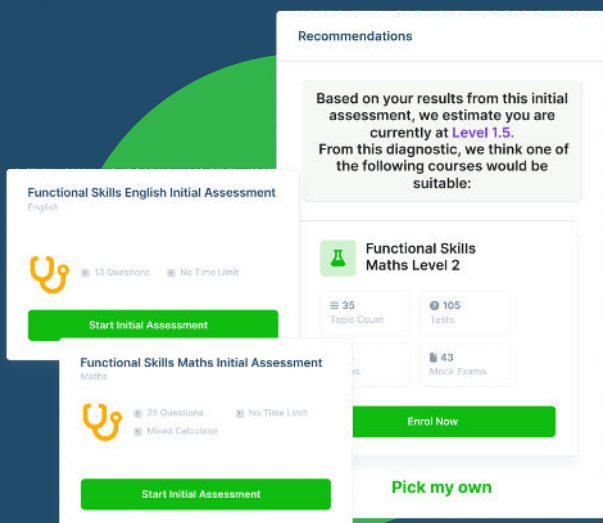
I confirm that this assessment is my own work.

**Candidate's signature** \_\_\_\_\_

**Date** \_\_\_\_\_

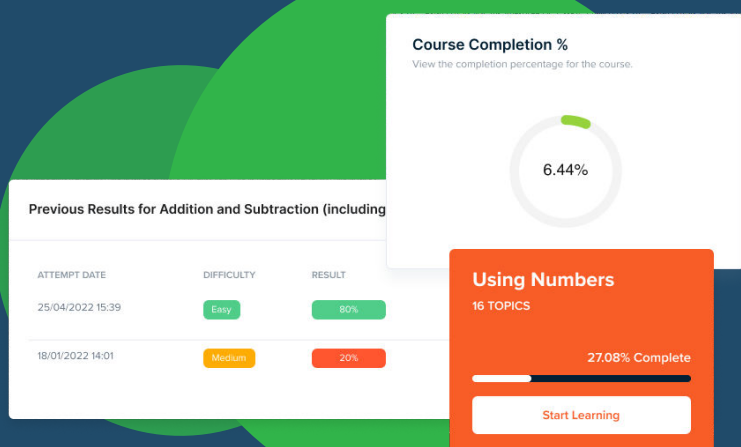
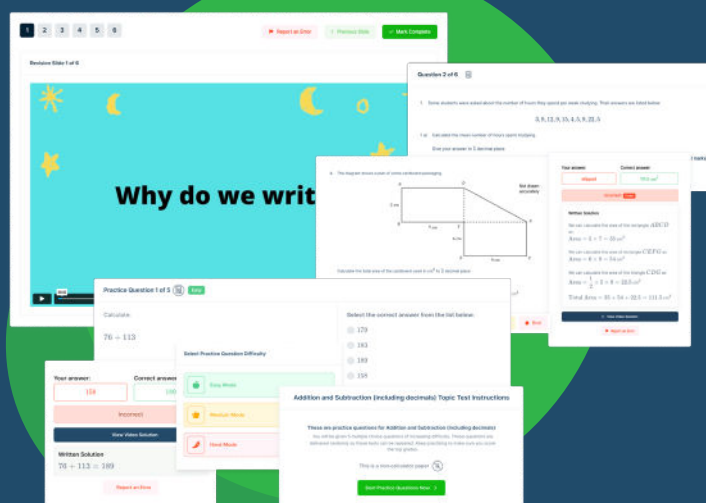


# FUNCTIONAL SKILLS ONLINE COURSES



- ✓ Your answers are analysed to determine your Current Level
- ✓ Suggested courses for you to enrol on based on your calculated level
- ✓ Always know the level you are currently working at
- ✓ Determine when you are ready to sit your exam

- ✓ Explainer videos on every topic
- ✓ Quick-fire style multiple choice questions
- ✓ Test your knowledge with exam-style questions
- ✓ Written solutions for all questions



- ✓ See your progress through as you progress through each topic area
- ✓ Get your average scores for practice questions, topic tests and mock exams
- ✓ View all practice question, topic test and mock exam attempts over time
- ✓ View historical attempts to analyse your progress over time

Or visit  
[passfunctionalskills.co.uk](https://passfunctionalskills.co.uk)

**Q1** What is the next number in this sequence?

21 36 51 66 81

**1 mark**

**Q2** Write these numbers in order. Start with the smallest.

1.96 1.54 0.87 6.80 4.43

0.87, 1.54, 1.96, 4.43, 6.80

**1 mark**

**Q3** Round 746 to the nearest 10

750

**1 mark**

- Q4** A farmer has **12 dairy cows**.  
Each cow gives **29 litres** of milk a day.

She wants to know how much milk she will get from all of the cows.



- a** What amount of milk will she get each day?

Space for working out

$$12 \times 29 = 348$$

..... 348 ..... litres

**1 mark**

- b** Use approximation to check your answer.

Show your check here

$$10 \times 30 = 300$$

**1 mark**

- Q5** A farmer gets this order from a local shop.  
She needs to work out how much milk she needs.

**Two pots** of yogurt can be made from **1 litre** of milk.

*Kitchen Café  
Broad Street  
FS20*

**Order Form**

**200 pots of yogurt**

What amount of milk will she need? **Give units with your answer.**

Show your working out.

two pots = 1 litre

200 pots =  $1 \times 100$  litres = 100 litres

Amount of milk.....100 litres.....

**2 marks**

- Q6** Yogurt is made in the farm dairy.  
It takes **seven hours and thirty minutes** to make.

The dairy assistant begins to make the yogurt at **9am**.  
The farmer needs to know what time the yogurt will be ready.

**a**

What time will the dairy assistant tell her? Use **am** or **pm** in your answer.

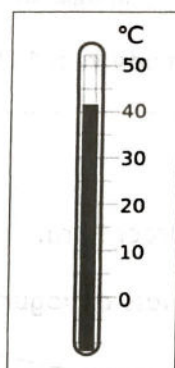
Space for working out.

9 am + 7hrs 30 mins = 16:30  
= 4:30 pm

Time .....4:30 pm.....

**1 mark**

To make the yogurt, the assistant heats the yogurt to this temperature.



The temperature has to be **cooled down by 35° C** before the yogurt can be stored in the fridge.

b

Which of these thermometers shows the temperature the yogurt can be stored in the fridge?

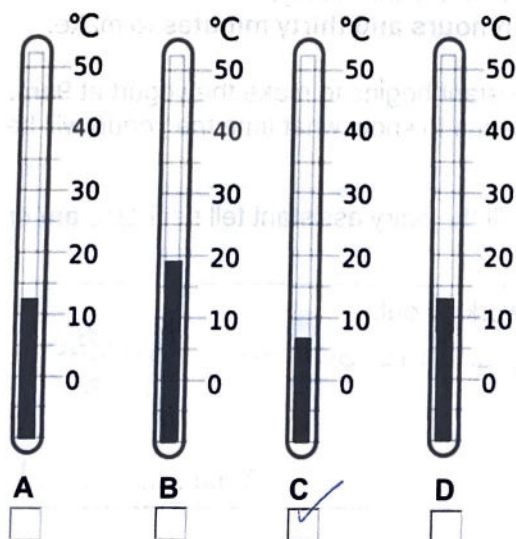
**Tick one.**

Space for working out

$$42 - 35 = 7^{\circ}\text{C}$$

$$A \approx 12.5^{\circ}\text{C} \quad C \approx 7^{\circ}\text{C}$$

$$B \approx 19^{\circ}\text{C} \quad D \approx 13^{\circ}\text{C}$$



**2 marks**



The shop sells the yogurt in cartons. The cartons are sold in these different sizes **450g**, **1kg**, **500g** and **350g**.

A customer asks the shop assistant for the carton that holds the most yogurt.

c

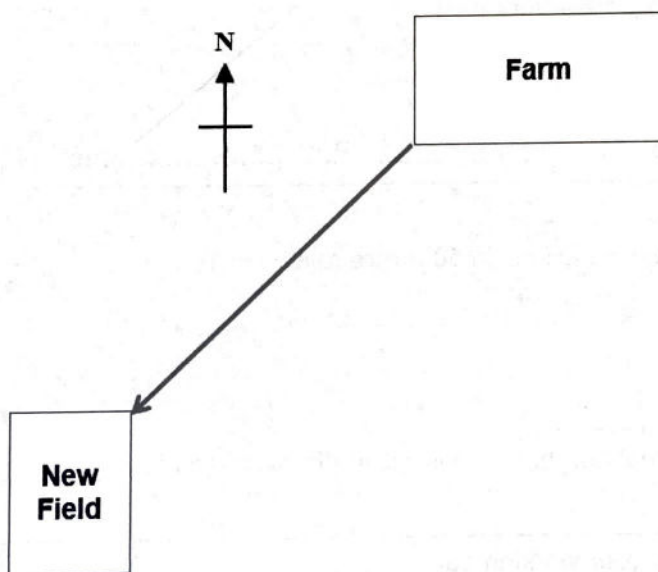
What size carton does the shop assistant give the customer?

1 kg

1 mark

**Q7** A farmer needs more land for his animals. There is a field to rent nearby. He arranges to inspect the field.

He needs to check on a map the direction in which to travel.



a

In which direction will he travel?

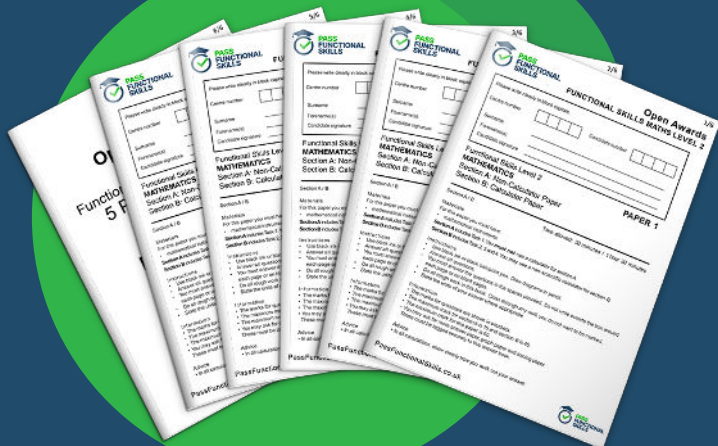
South - west

1 mark

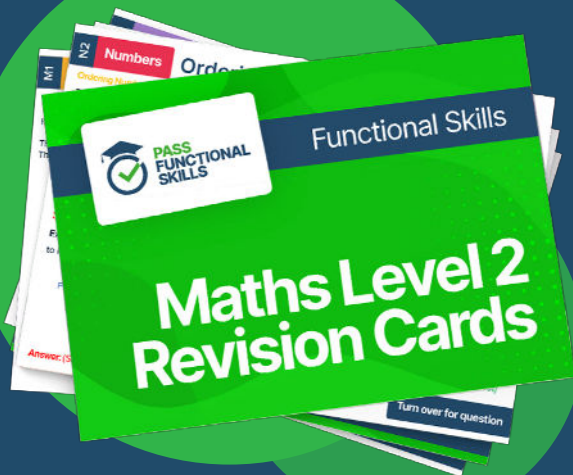




**PASS  
FUNCTIONAL  
SKILLS**



Functional Skills Maths  
Level 2 Practice Papers



Functional Skills Maths  
Level 2 Revision Cards



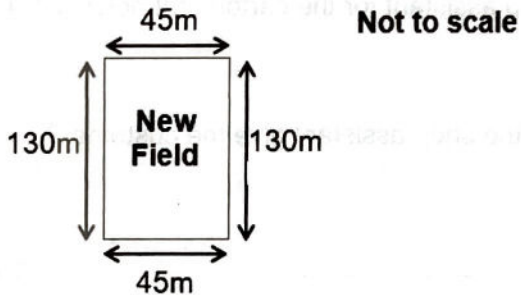
Functional Skills English Level 2  
Practice Papers & Revision Cards



Functional Skills Maths  
Level 2 Pocket Revision Guide

Or visit  
[passfunctionalskills.co.uk](https://passfunctionalskills.co.uk)

The farmer decides to rent the field. It needs a new fence all the way round the edge. He measures the sides of the field.



- b** What amount of fencing will he need?

Space for working out

$$45 + 45 + 130 + 130 = 350$$

..... 350 ..... metres

**1 mark**

Wire fencing is sold in **50 metre** rolls.



- c** What number of rolls will the farmer need to buy?

Show your working out

$$350 \div 50 = 7$$

..... 7 ..... rolls

**2 marks**

Each roll of fencing costs £35.95

The farmer asks his assistant to **estimate** the total cost of the fencing.

- d What does the assistant tell the farmer?

Show your working out.

$$£35 \times 7 = £245$$

£..... $\overline{£245}$ .....

2 marks

- Q8 A farmer needs to rent a tractor and a trailer at harvest time.

She needs to rent a tractor and trailer for **12 weeks** and wants to hire the **cheapest** one.



Tractor and Trailer	Cost to rent	Time
A	£70	per week
B	£1000	for 12 weeks
C	£920	for 12 weeks

- a Which tractor and trailer should she rent?

Show your working out.

$$A = £70 \times 12 = £840$$

$$B = £1000$$

$$C = £920$$

Tractor and Trailer ..... A .....

Cost for 12 weeks £ .....  $\overline{840}$  .....

2 marks

She must pay  $\frac{1}{5}$  of the cost to rent the tractor and trailer today.

She will pay the rest when she collects the tractor and trailer.

- b** What amount will she pay today?

Show your working out.

$$£840 \div 5 = £168$$

£ 168 .....

**2 marks**

- c** What amount will she pay when she collects the tractor and trailer?

Show your working out.

$$840 - 168 = 672$$

£ 672 .....

**1 mark**

- Q9** An apprentice starts to work for a farmer.  
He will work **40 hours each week**.

He uses this table to find out how much he should be paid **each week** before any deductions are made.

Age	25 and over	21 to 24	18 to 20	Under 18	Apprentice
Hourly Pay	£8.21	£7.70	£6.15	£4.35	£3.90

**a**

What will the apprentice be paid **each week**?

Show your working out.

$$£3.90 \times 40 = £156$$

£ 156 .....

**2 marks**

This week he has to work 40 hours.  
He worked 9 hours **each day** on Monday, Tuesday, Wednesday and Thursday.

On Friday morning he checks the time on the clock when he starts work.



**b**

What time can he finish work on Friday?  
**Use am or pm in your answer.**

Space for working out.

$$9 \times 4 = 36$$

$$40 - 36 = 4 \text{ hours on Friday}$$

$$6:20_{\text{am}} + 4 \text{ hrs} = 10:20 \text{ am}$$

**Time to finish work** ..... 10:20 am .....

**2 marks**



- Q10** A farm held an event to raise money for charity.  
The event lasted for 3 days.

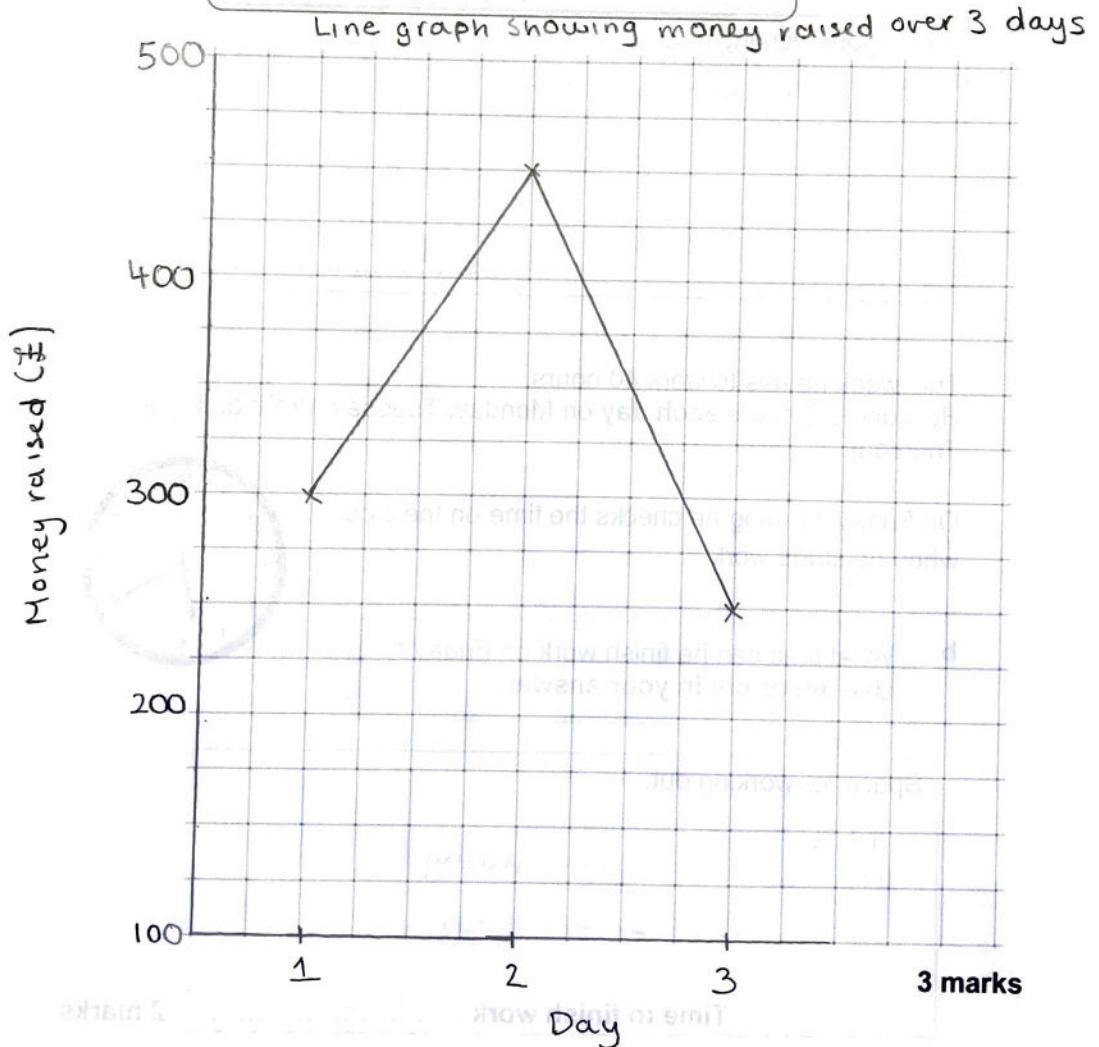
The farm manager kept a record of the amount of money raised.  
She asks her assistant to draw a line graph to show how much money was raised each day.

**Day 1 £300**

**Day 2 £450**

**Day 3 £250**

- a** Draw a line graph to show this information.  
**Put labels on your graph.**



The farm manager asks the assistant which day made the most money.

**b**

What does the assistant tell him?

Day 2

**1 mark**

**Total marks: 30**

**End of calculator paper**