

ENTRY LEVEL 2 FUNCTIONAL SKILLS MATHS – PART A

QUESTION PAPER

SAMPLE ASSESSMENT MATERIAL

Learner name:	<i>Auto-filled by XAMS</i>
Learner number:	<i>Auto-filled by XAMS</i>
Your Signature:	
Today's date:	<i>Auto-filled by XAMS</i>

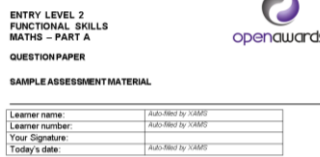


Total marks available: **7 marks**



Time limit: **25 minutes**

You need:



This **question and answer paper**



 Total marks available: 7 marks

A **pen** with black or blue ink



A **pencil** and an **eraser**



You cannot use:



The **Internet**



A **calculator**



Instructions

1. Check your name is correct on Page 1
Write your **signature** if it is
2. **Read** each text and question carefully
3. **Write** your answers in the spaces provided
4. Answer **all** the questions
Remember to show your **workings**
5. **Check** your work at the end
6. Ask your teacher for more **paper** if you need it.
Write your name on any extra pieces of paper.
7. Your teacher will **collect** your paper at the end of the assessment



Answer:



Question 1**(1 mark)**

Put the following numbers in order.

176 63 113 140 128

--	--	--	--	--

Question 2**(2 marks)**

Divide 86 by 3 and show the **remainder**.

Show your workings.

--

Question 3

(2 marks)

Ashley is feeling unwell.

Ashley's temperature yesterday was 37 degrees.

The thermometer shows Ashley's temperature today.



How many **degrees higher** is Ashley's temperature today than it was yesterday?

Show your workings.

Question 4

(2 Marks)

Monica needs 83 plants to fill a flower bed at the park.

She only has 56 plants.

How many **more** plants does Monica need?



End of Part A

ENTRY LEVEL 2 FUNCTIONAL SKILLS MATHS – PART B

QUESTION PAPER

SAMPLE ASSESSMENT MATERIAL



Learner name:	<i>Auto-filled by XAMS</i>
Learner number:	<i>Auto-filled by XAMS</i>
Your Signature:	
Today's date:	<i>Auto-filled by XAMS</i>



Total marks **21** marks
available:



Time limit: **1 hour**

You need:



This **question and answer paper**



A **pen** with black or blue ink



A **pencil** and an **eraser**



A **calculator** (non-scientific)



You cannot use:



The **Internet**



Instructions

1. Check your name is correct on the front page.
Write your **signature** if it is.
2. **Read** each text and question carefully
3. **Write** your answers in the spaces provided
4. Answer **all** the questions.
Remember to show your **workings**.
5. **Check** your work at the end
6. Ask your teacher for more **paper** if you need it.
Write your name on any extra pieces of paper.
7. Your teacher will **collect** your paper at the end of the assessment



Answer:



Question 5

(1 mark)

The houses on this side of the road all have **odd numbers**.

Fill in the other house numbers.

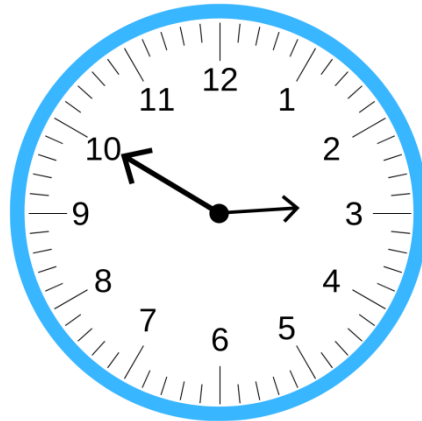
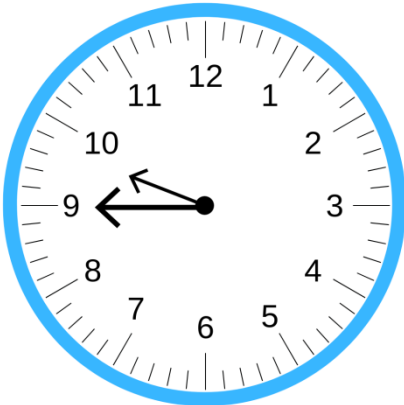
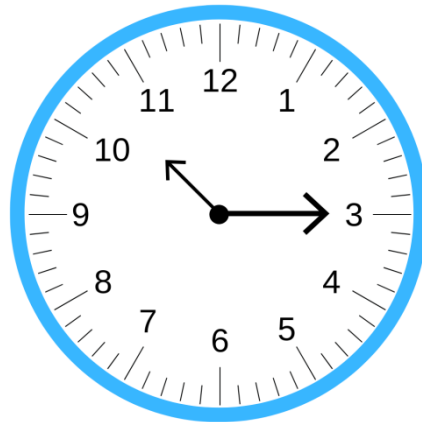
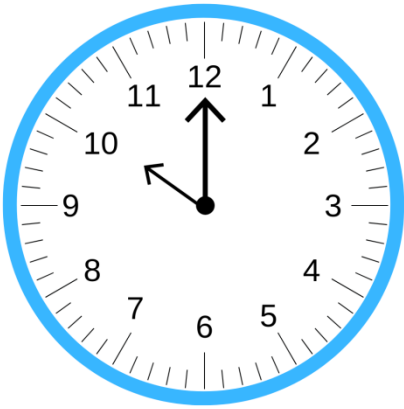


Question 6

(1 mark)

Jo is going to college by bus. The next bus leaves at a quarter past ten.

Tick the clock that shows the **time** the bus leaves.



Question 7

(2 marks)

Jo and four friends go to college.

The cost of a return train ticket is £11 **each**.

How much do they pay in **total**?

Show your workings.

Question 8

(1 mark)

Michael and three friends buy a pizza to share. They cut it into equal slices.

What fraction of the pizza does each person get?

Question 9

(2 marks)

Rebecca wants to know how long her journey to work takes.

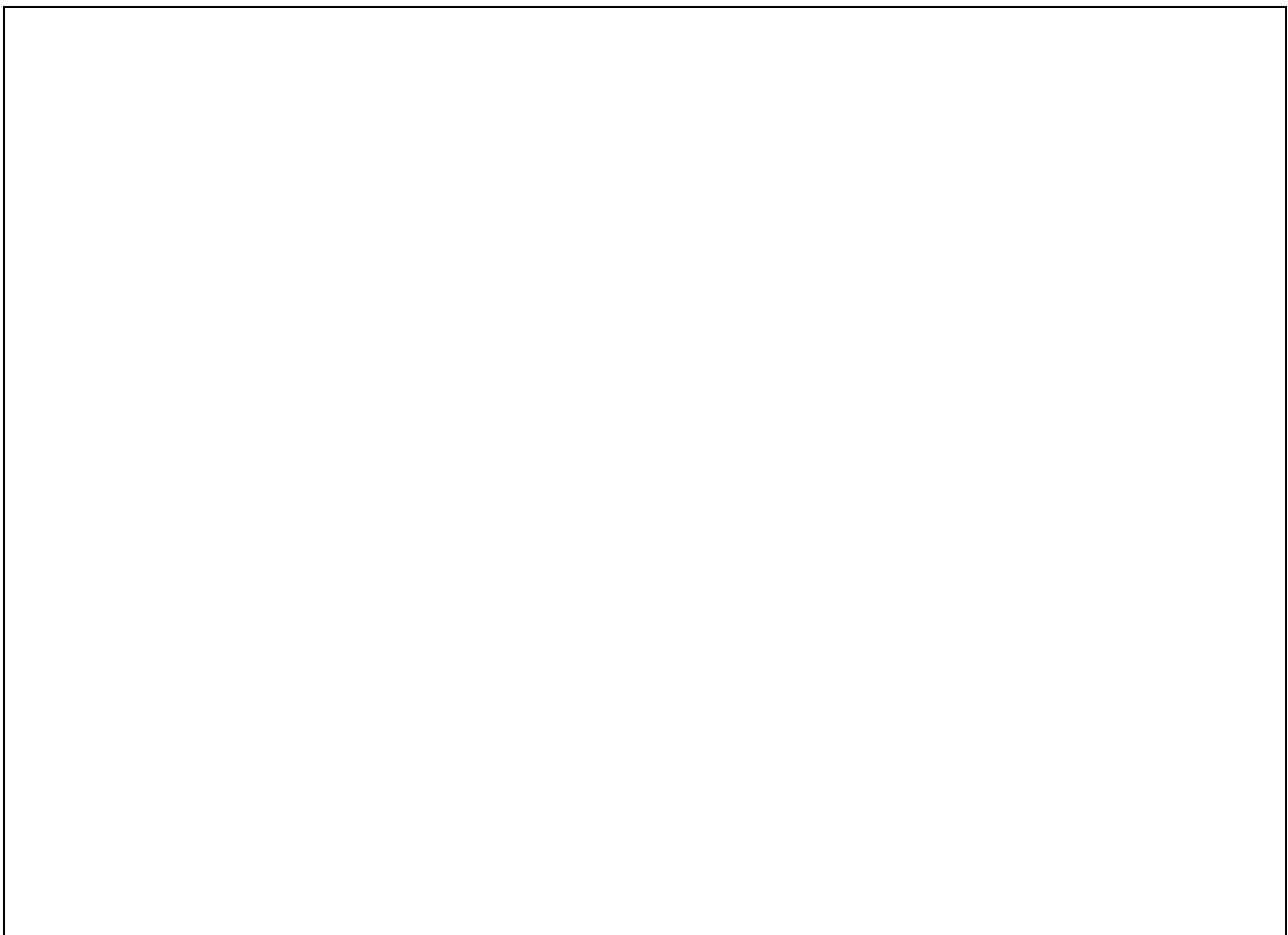
It takes 12 minutes to walk from home to the bus stop.

The bus journey takes 49 minutes.

Her work is an 18 minute walk from where the bus drops her off.

How long is the total journey time?

Show your workings.



Question 10

(1 mark)

How many hours are there in one day?

Question 11

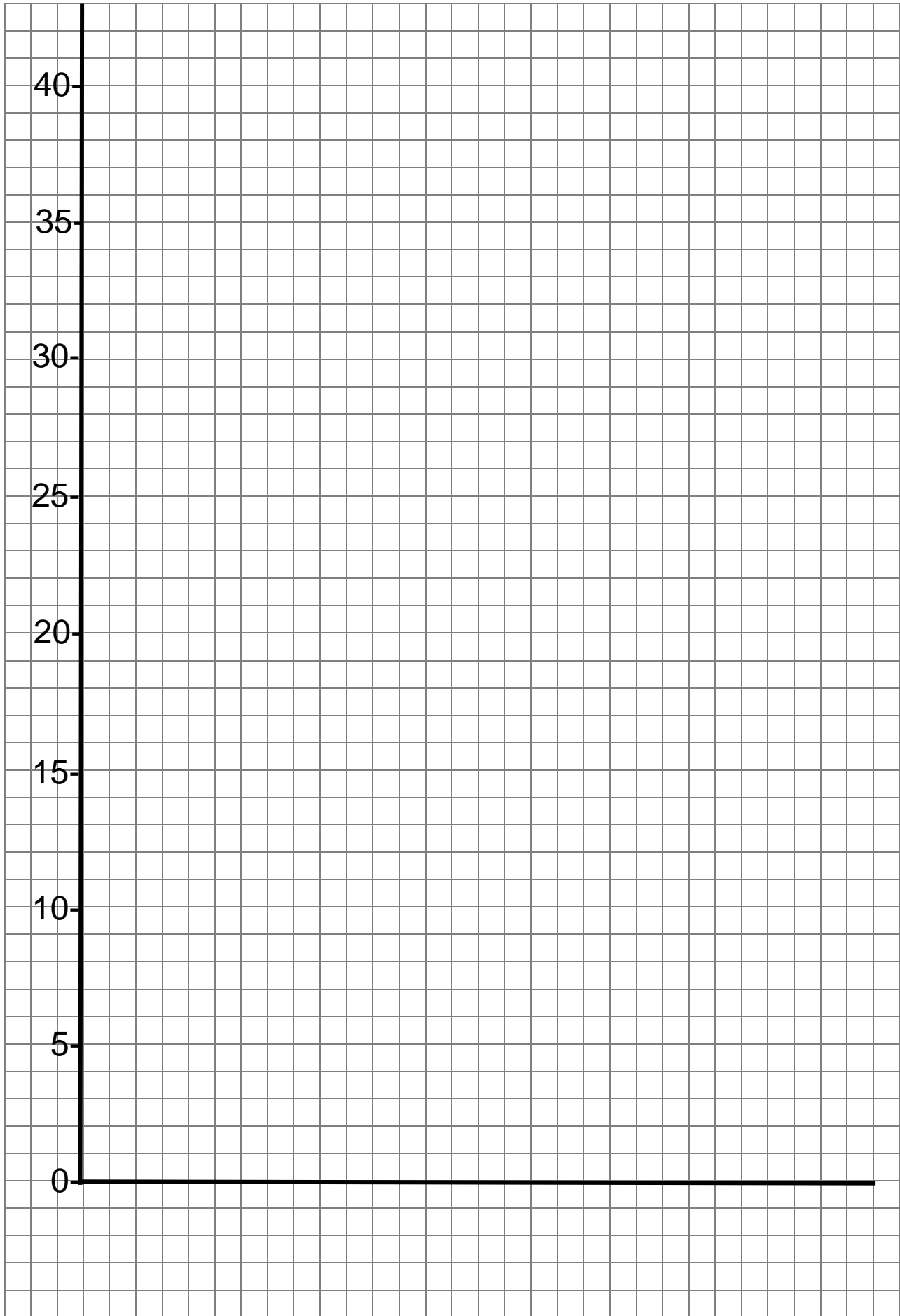
Alicia is selling bars of soap. She keeps a record of how many of each type are sold.

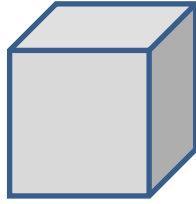
		Totals
Lemon	### ##	
Strawberry	### ### ## ## ##	
Vanilla	### ## ##	
Orange	### ## ## ## ## ##	

- a) Complete the totals column in the tally chart. **(1 mark)**

- b) Create a bar chart to show the number of bars of soap sold. **(2 marks)**
Use the graph paper on the next page.

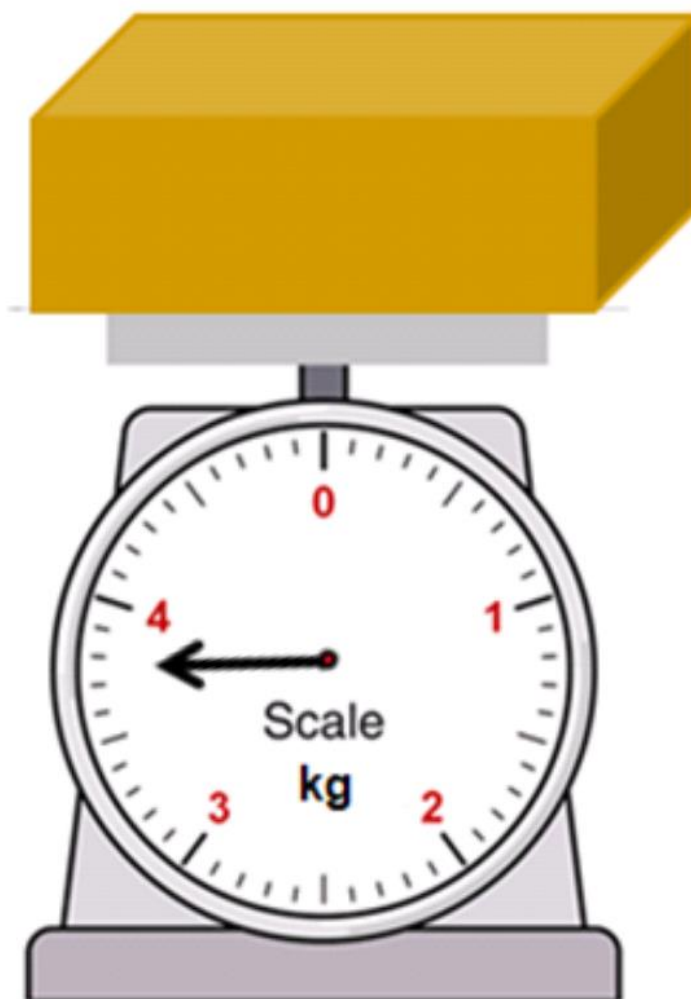
- c) Which type of soap sold the most bars? **(1 mark)**
Use the information from the bar chart.





How many edges does a cube have?

Show your workings.

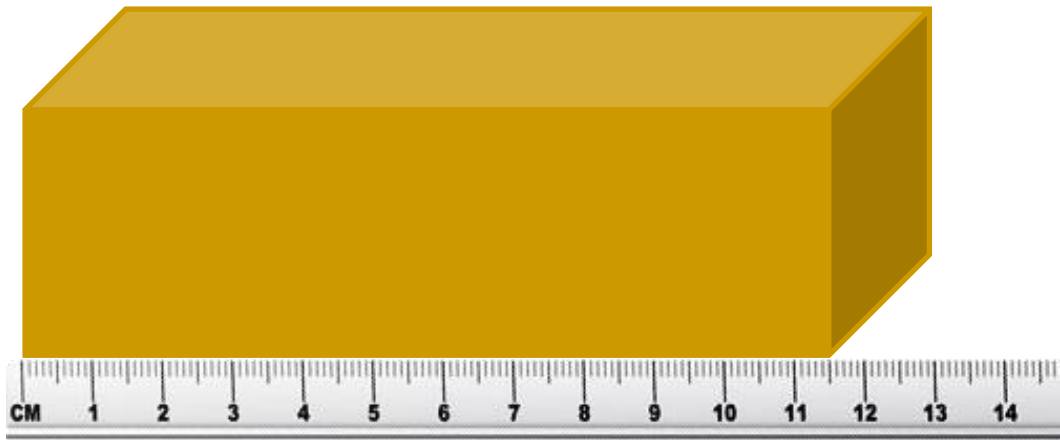


How much does the parcel weigh to the nearest kilogram?

Question 14

(2 marks)

Kali has a parcel to send.



a) How long is the parcel in mm?

(1 mark)

Length	Type of Parcel
110mm or less	Small Parcel
Between 111mm and 250mm	Medium Parcel
Between 251mm and 500mm	Large Parcel
501mm or more	Extra Large Parcel

b) Use this table to decide what type of parcel Kali is sending.

(1 mark)

Write the answer in the box below.

Question 15**(1 mark)**

Kevin has another parcel to send.

It is a **Large Parcel**. He wants it to arrive the **next day**.

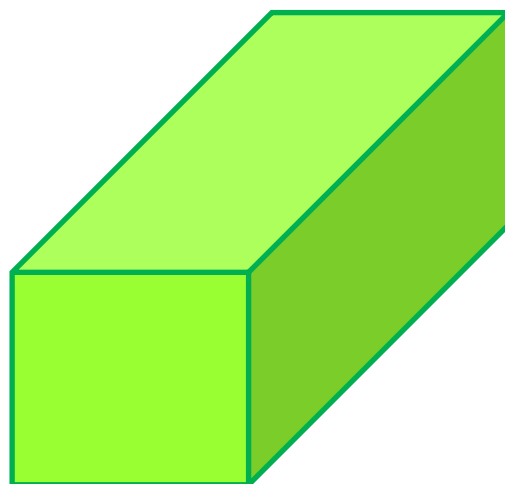
Type of Parcel	Next Day Delivery	3 Day Delivery	One Week Delivery
Small Parcel	£3.80	£2.40	£1.90
Medium Parcel	£5.80	£4.60	£3.20
Large Parcel	£7.80	£6.60	£5.20
Extra Large Parcel	£11.80	£9.60	£7.20

How much will it cost to send the parcel?

Question 16**(1 mark)**

Kevin will write the address **on the top** of the parcel.

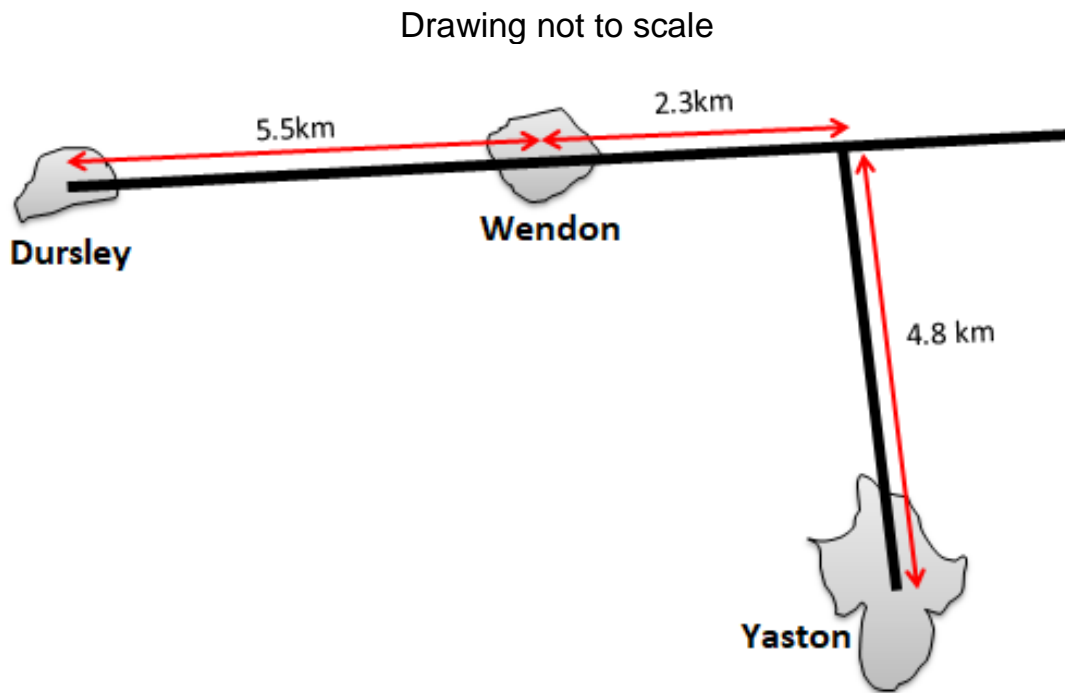
Put a **cross** on the top of the parcel to show where the address will go.



Question 17

(2 marks)

The parcel is being collected from Dursley and will be delivered to Yaston by road.



Use the map above.

How **far** is it from Dursley to Yaston by road?

Show your workings.

End of assessment