

# TQUK Functional Skills Qualification in Maths at Level 1

## Examination Past Paper 4

Please complete the details below using black or blue ink. Use **BLOCK CAPITALS**.

Learner Name: \_\_\_\_\_

Learner Number: \_\_\_\_\_

Date: \_\_\_\_\_

Centre Name: \_\_\_\_\_

### Instructions:

- read each question **carefully**
- answer **all** questions
- write your answers **clearly** in the spaces provided
- **check** your answers.

### Information:

- this examination has **two** sections. These are clearly labelled
- you are **not allowed** to use a calculator for Section A
- you **are allowed** to use a calculator for Section B
- the **maximum** mark for this examination is 60
- the marks available for each question are shown in **bold** beneath each question.

### Items:

- you **will need** a pen with black or blue ink, a pencil, a ruler and an eraser (for diagrams, graphs and charts only)
- you **will need** a basic calculator for Section B only
- you **will need** a protractor
- you **will not** need any other stationery or equipment.

### Time allowed:

**30 minutes** for Section A (Non-calculator)

**90 minutes** for Section B (Calculator)

**Do not open this examination paper until you are told to do so.**

### For examiner use only

	<b>Marks available</b>	<b>Marks awarded</b>	<b>Second marks</b>
Section A	15		
Section B	45		
Total marks	60		

**This page is intentionally left blank.**

## Section A: Non-calculator

There are **15 marks** available in this section.  
 You must **not** use a calculator in this section.  
 You will have **30 minutes** to complete this section.



1. Work out  $3.2 \div 100$

<b>Answer</b>	

[1]

2. Write these numbers in order starting with the lowest:

13 987

9 999

100 101

1876

56 345

Show any working here:

<p>Show any working here:</p>					
<b>Answer</b>					
	<b>Lowest</b>				<b>Highest</b>

[1]

Questions continue on the following page

3. Work out  $8 - 12 + 1$

Answer	

[1]

4. Work out  $10.04 - 3.98$

Answer	

[1]

5. The price for a baseball cap is £6.00  
There is a 25% discount applied in a sale.  
Work out the price of the baseball cap after the discount.

Answer	£

[2]

6. Work out the mean of these numbers:

1200

1500

2000

1750

1800

<table border="1" style="display: inline-table;"><tr><td style="width: 100px;"><b>Answer</b></td><td></td></tr></table>	<b>Answer</b>	
<b>Answer</b>		

**[2]**

7. Nilam and Morgan want to divide 140 sweets in the ratio 1 : 6  
How many sweets should Nilam and Morgan each receive?

<table border="1" style="display: inline-table;"><tr><td style="width: 100px;"><b>Nilam</b></td><td></td></tr><tr><td><b>Morgan</b></td><td></td></tr></table>	<b>Nilam</b>		<b>Morgan</b>	
<b>Nilam</b>				
<b>Morgan</b>				

**[2]**

**Questions continue on the following page**

8. A caterer has made 24 meals for an event.

This is  $\frac{1}{6}$  of the total number of meals that need to be made.

How many meals need to be made in total?

<b>Answer</b>	<b>meals</b>

[2]

9. Vanya wants to paint the wall shown:



Not drawn to scale

Vanya has enough paint to cover 85 000 square centimetres ( $\text{cm}^2$ ).

Does Vanya have enough paint?

**Show how you decide.**

Large empty rectangular box for showing the decision process.

Answer

[3]

**End of Section A.**

**Section B begins on Page 7.**

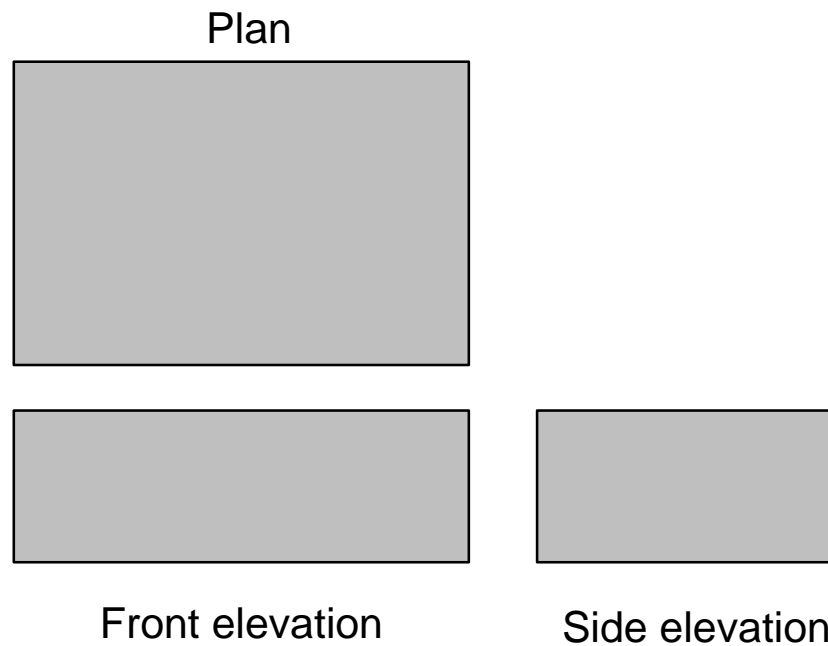


## Section B: Calculator

There are **45 marks** available in this section.  
You **can** use a basic calculator in this section.  
You will have **90 minutes** to complete this section.



1. What 3D shape is shown by the plan and elevations below?



<b>Answer</b>	
---------------	--

[1]

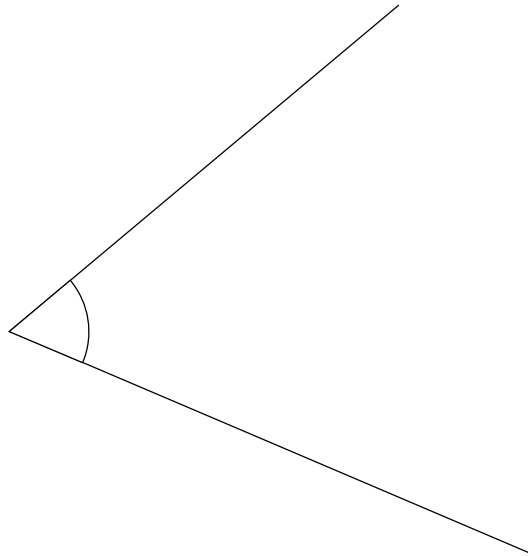
2. Calculate  $77^2$

<b>Answer</b>	

[1]

Questions continue on the following page

3. Measure the angle.



Answer	
--------	--

	°
--	---

[1]

4. Calculate:

$$\frac{1}{8} \text{ of } 5$$

Give your answer correct to 2 decimal places.

Answer	
--------	--

[2]

5. The population of the village of Greentree was 3760 last year.

The population increased by 5% this year.

Work out the population of Greentree this year.

--	--

<b>Answer</b>	
---------------	--

[2]

6. Jun estimates the total of the following numbers:

3.87      16.4      10.47

Jun rounds each of the numbers to the nearest whole number.

Jun then adds the whole numbers together.

What total does Jun get?

**Show your working.**

--	--

<b>Answer</b>	
---------------	--

[2]

**Questions continue on the following page**

7. Alex ran a marathon in 210 minutes.

The target time was  $3\frac{1}{4}$  hours.

Did Alex beat the target time?

**Show how you decide.**

--	--

**Answer**

**[3]**

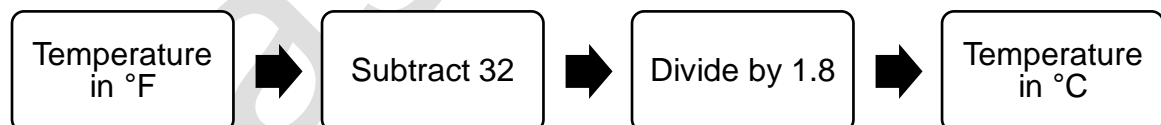
8. Lei wants to go on holiday to a country where the current temperature is warmer than 25° Celsius (°C).

The temperature in France is currently 68° Fahrenheit (°F).

Is France currently warm enough for Lei?

**Show how you decide.**

Use:



--	--

**Answer**

**[3]**

9. Arian looks at restaurant reviews online.

- $\frac{4}{7}$  of 196 people would recommend restaurant A
- $\frac{5}{8}$  of 184 people would recommend restaurant B.

Which restaurant has the higher number of recommendations?

**Show how you decide.**

Past Paper	
<b>Answer</b>	

**[3]**

**Questions continue on the following page**

10. These are the quiz scores for 15 teams.

19	11	6	15	18
11	4	9	11	14
8	13	12	3	5

Use this information to complete a grouped frequency table with 4 equal groups:

Score	Frequency
Total	

[3]

**11.** Charlie wants to take out a loan of £2400

There are two options:

- a) pay 5% per year simple interest over 3 years.
- b) pay back £915 each year for 3 years.

Charlie wants to choose the cheapest option.

Which option should Charlie choose?

**Show how you decide.**

Past paper	
<b>Answer</b>	

**[4]**

**Questions continue on the following page**

- 12.** A gardener planted 360 daffodil bulbs.  
Only 95% of them survived.  
The gardener sold bunches of 6 daffodils for 85p a bunch.  
How much money did the gardener receive in total?  
Give your answer in pounds (£).

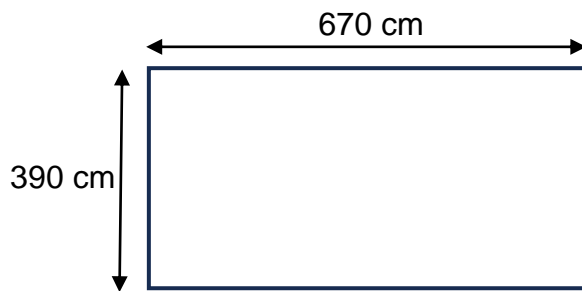
Past paper

<b>Answer</b>	£
---------------	---

**[4]**



13. Taylor put a fence around this rectangular garden:



Not drawn to scale

Fence panels are 1.6 metres (m) wide.

The fence panels can be cut to size once bought.

How many fence panels will Taylor need to buy?

Answer

[5]

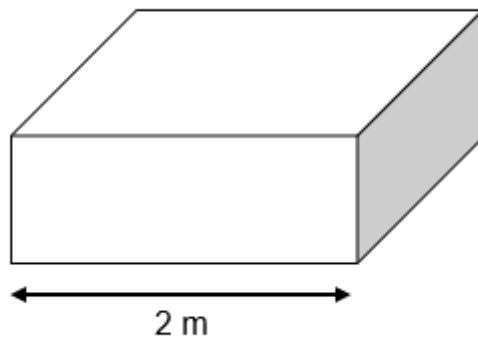
Questions continue on the following page

14. The diagram shows a paddling pool with a base in the shape of a square.

Mo's garden hose takes 3 seconds to produce 1 litre of water.

How long will it take Mo to fill the pool to a height of 0.4 metres using the garden hose?

$$1 \text{ m}^3 = 1000 \text{ litres}$$



Not drawn to scale

Show your working.

Answer

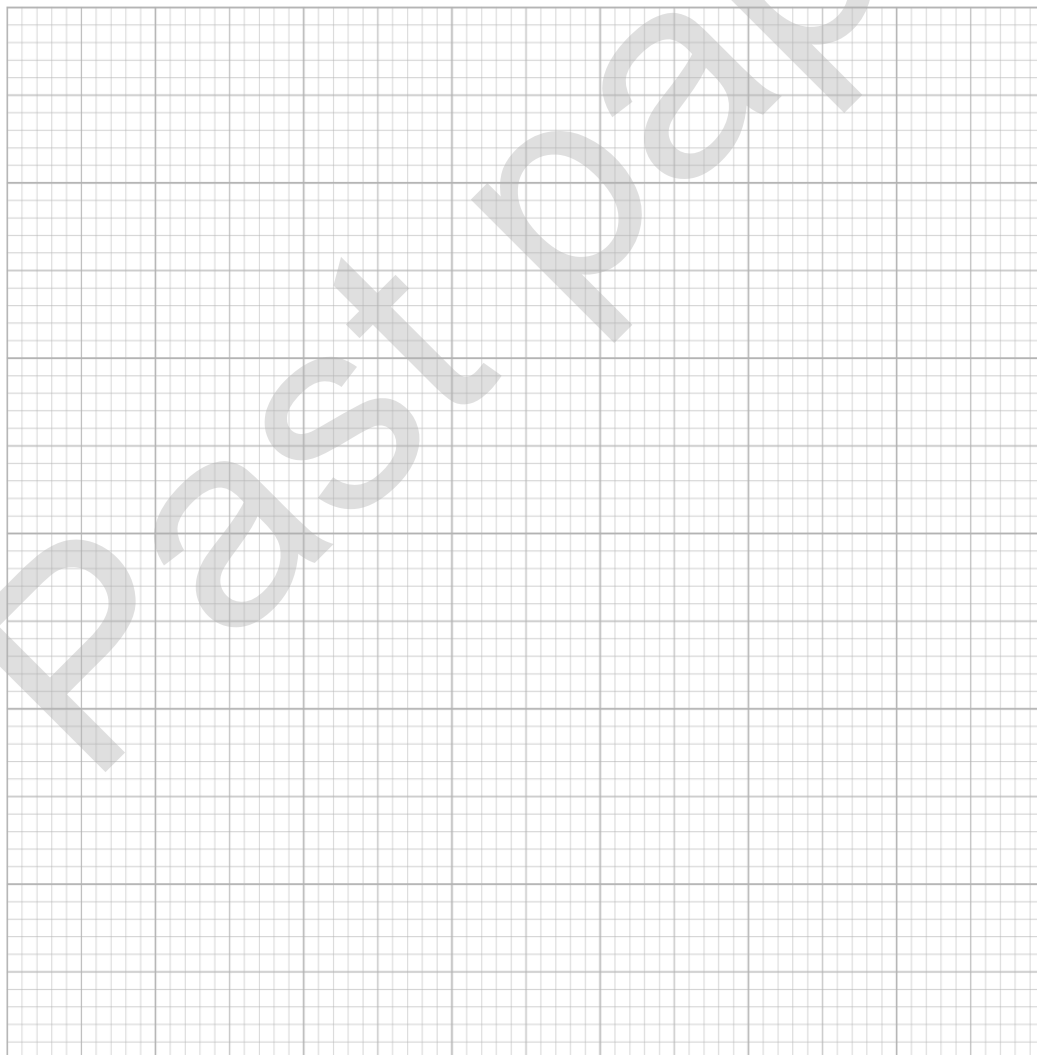
[5]

15. Ali completed a survey of 200 people to find out how they travelled to the local shop.

40% of the people said they travelled by car.

Type of travel	Number of people
Walk	55
Cycle	60
Car	
Bus	

Use this information to create a bar chart showing how the people surveyed travelled to the local shop.



[6]

**This is the end of the assessment.**