

Please check the examination details below before entering your candidate information

Candidate surname

Other names

**Pearson Edexcel
Functional Skills**

Centre Number

Candidate Number

Set 8

Time: 25 minutes

Paper Reference **PMAT1/N08**

Mathematics

Level 1

Section A (Non-Calculator)



You must have:

Pen, HB pencil, eraser, ruler graduated in cm and mm, protractor, pair of compasses. Tracing paper may be used.

Total Marks

My signature confirms that I will not discuss the content of the test with anyone.

Signature: _____

Instructions

- Use **black** ink or ball-point pen.
- **Fill in the boxes** at the top of this page with your name, centre number and candidate number.
- Sign the declaration.
- Answer **all** questions.
- Write your final answers in the boxes provided.
- Answer the questions in the spaces provided – *there may be more space than you need.*
- You **must** show clearly how you get your answers in the spaces provided. Marks will be awarded for your working out.
- Check your working and answers at each stage.
- Diagrams are **not** accurately drawn, unless otherwise indicated.
- **Calculators may not be used.**
- Take the value of π to be 3.14

Information

- The total mark for this section is 14.
- The marks for **each** question are shown in brackets.
– *use this as a guide as to how much time to spend on each question.*
- This sign shows where marks will be awarded for showing your checks.

Advice

- Read each question carefully before you start to answer it.
- Check your answers if you have time at the end.

Turn over ►

P68468A

©2021 Pearson Education Ltd.

1/1/1/1




Pearson

SECTION A

Answer ALL questions. Write your answers in the spaces provided.

1

$7 \times 13 = 91$

(a) What is $91 \div 7$?

(1)

(b) Work out $4 + 5 \times 3$

(1)



(c) Use a reverse calculation to show a check of your answer for part (b).

(1)

(Total for Question 1 is 3 marks)

DO NOT WRITE IN THIS AREA

DO NOT WRITE IN THIS AREA

DO NOT WRITE IN THIS AREA

DO NOT WRITE IN THIS AREA

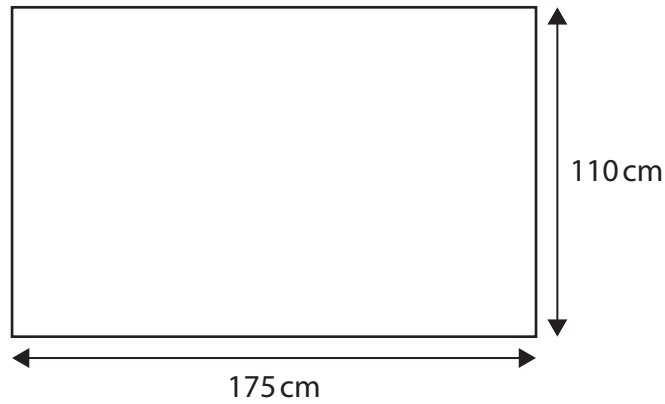
DO NOT WRITE IN THIS AREA

DO NOT WRITE IN THIS AREA



2 Esme is putting copper tape around a flower bed in her garden.

The flower bed is rectangular in shape.
She has this sketch of the flower bed.



Esme wants enough tape to go around all the edges of the flower bed 3 times.

Work out the length of tape Esme needs.
Give your answer in cm.

(3)

cm

(Total for Question 2 is 3 marks)



3 Jeff is looking for car insurance.
He must tell the insurance company the mean number of miles he drives his car each year.

Jeff bought his car 5 years ago.

Jeff knows when he bought the car the mileage was 27 563

Today the mileage is 72 889

Work out the mean mileage each year for the last 5 years.

(4)

miles

(Total for Question 3 is 4 marks)

DO NOT WRITE IN THIS AREA

DO NOT WRITE IN THIS AREA

DO NOT WRITE IN THIS AREA

DO NOT WRITE IN THIS AREA

DO NOT WRITE IN THIS AREA

DO NOT WRITE IN THIS AREA



4 Jess buys sweets for her shop at a wholesalers.

On Tuesday Jess sees sweets with a price of £147.65
The price does not include VAT.

Jess wants to estimate the total cost including VAT.
VAT is 20%

Work out an estimate for the total cost of these sweets.
You **must** show your working.

(4)

£

(Total for Question 4 is 4 marks)

TOTAL FOR SECTION A IS 14 MARKS



P 6 8 4 6 8 A 0 5 0 8

DO NOT WRITE IN THIS AREA

DO NOT WRITE IN THIS AREA

DO NOT WRITE IN THIS AREA

DO NOT WRITE IN THIS AREA

DO NOT WRITE IN THIS AREA

DO NOT WRITE IN THIS AREA

BLANK PAGE



DO NOT WRITE IN THIS AREA

DO NOT WRITE IN THIS AREA

DO NOT WRITE IN THIS AREA

DO NOT WRITE IN THIS AREA

DO NOT WRITE IN THIS AREA

DO NOT WRITE IN THIS AREA

BLANK PAGE



P 6 8 4 6 8 A 0 7 0 8

DO NOT WRITE IN THIS AREA

DO NOT WRITE IN THIS AREA

DO NOT WRITE IN THIS AREA

BLANK PAGE



Please check the examination details below before entering your candidate information

Candidate surname

Other names

**Pearson Edexcel
Functional Skills**

Centre Number

Candidate Number

Set 8

Time: 1 hour 30 minutes

Paper Reference **PMAT1/C08**

Mathematics

Level 1

Section B (Calculator)



You must have:

Pen, calculator, HB pencil, eraser, ruler graduated in cm and mm, protractor, pair of compasses. Tracing paper may be used.

Total Marks

My signature confirms that I will not discuss the content of the test with anyone.

Signature: _____

Instructions

- Use **black** ink or ball-point pen.
- **Fill in the boxes** at the top of this page with your name, centre number and candidate number.
- Sign the declaration.
- Answer **all** questions.
- Write your final answers in the boxes provided.
- Answer the questions in the spaces provided – *there may be more space than you need.*
- You **must** show clearly how you get your answers in the spaces provided. Marks will be awarded for your working out.
- Check your working and answers at each stage.
- Diagrams are **not** accurately drawn, unless otherwise indicated.
- **Calculators may be used.**
- If your calculator does not have a π button take the value of π to be 3.14

Information

- The total mark for this section is 42.
- The total mark for this paper is 56.
- The marks for **each** question are shown in brackets
– *use this as a guide as to how much time to spend on each question.*
- This sign shows where marks will be awarded for showing your checks.

Advice

- Read each question carefully before you start to answer it.
- Check your answers if you have time at the end.

Turn over ►

P68469A

©2021 Pearson Education Ltd.

1/1/1/1



P 6 8 4 6 9 A 0 1 1 6

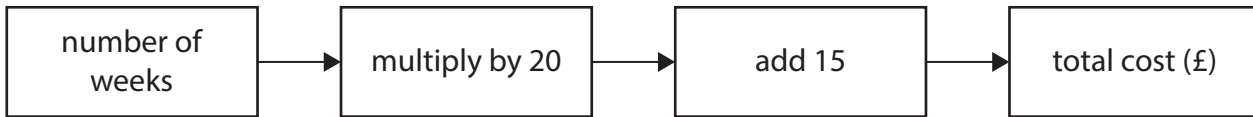


Pearson

SECTION B

Answer ALL questions. Write your answers in the spaces provided.

- 1** Russell wants to hire a cement mixer.
He uses this formula to work out the total cost.



Russell wants to hire the mixer for 4 weeks.
He thinks the total cost will be less than £100

Is Russell correct?
Show why you think this.

(3)

(Total for Question 1 is 3 marks)

DO NOT WRITE IN THIS AREA

DO NOT WRITE IN THIS AREA

DO NOT WRITE IN THIS AREA

DO NOT WRITE IN THIS AREA

DO NOT WRITE IN THIS AREA

DO NOT WRITE IN THIS AREA



2

- (a) Rob throws a fair coin once.
Write down the probability the coin lands on Heads.

(1)

- (b) Write the following numbers in order.
Start with the smallest number.

(1)

0.4 0.31 0.371 0.130 0.38

Here are two mixed numbers $7\frac{3}{10}$ and $7\frac{2}{5}$

- (c) Which of these two mixed numbers is greater?
Show why you think this.

(2)

(Total for Question 2 is 4 marks)



3 Mo has 5 hens in his garden.

12 kg of hen food costs £10.50

Mo knows 1 hen needs 150 g of this food each day.

Work out the cost of this food for the 5 hens for one day.
Give your answer to the nearest penny.

(5)

DO NOT WRITE IN THIS AREA

DO NOT WRITE IN THIS AREA

DO NOT WRITE IN THIS AREA

DO NOT WRITE IN THIS AREA

DO NOT WRITE IN THIS AREA

DO NOT WRITE IN THIS AREA



DO NOT WRITE IN THIS AREA

DO NOT WRITE IN THIS AREA

DO NOT WRITE IN THIS AREA

DO NOT WRITE IN THIS AREA

DO NOT WRITE IN THIS AREA

DO NOT WRITE IN THIS AREA

[Large empty rectangular area for writing]

[Small rectangular box containing the letter 'p']

(Total for Question 3 is 5 marks)



4 Nazrin uses an app to record her sleep quality score.

She has this information for last week.

	Mon	Tues	Wed	Thu	Fri	Sat	Sun
sleep quality score	88	80	69	73	75	81	85

Nazrin thinks the range of her sleep quality scores for last week is less than 20

- (a) Is Nazrin correct?
Show why you think this.

(2)



- (b) Show a check of your answer.

(1)

(Total for Question 4 is 3 marks)

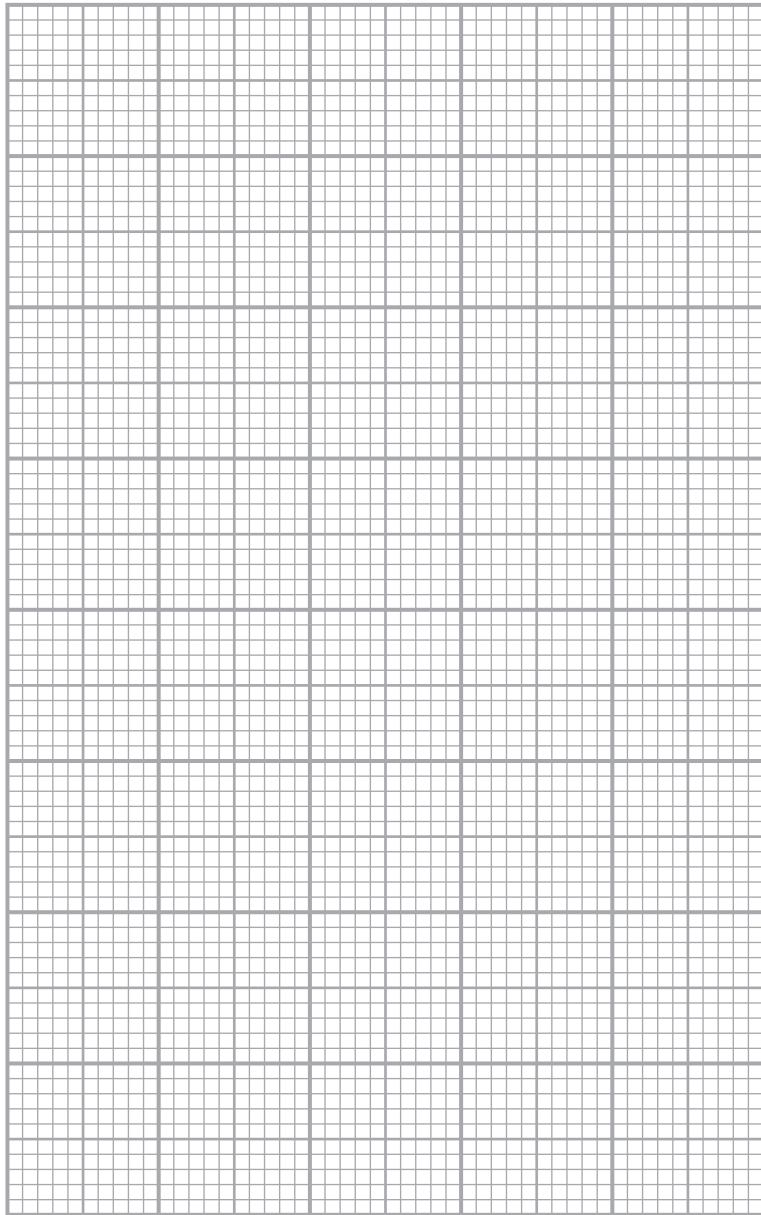


5 Here is some information about the test scores of forty students.

test score	0 to 10	11 to 20	21 to 30	31 to 40
number of students	7	15	10	8

On the grid below draw a bar chart for this information.

(3)



(Total for Question 5 is 3 marks)

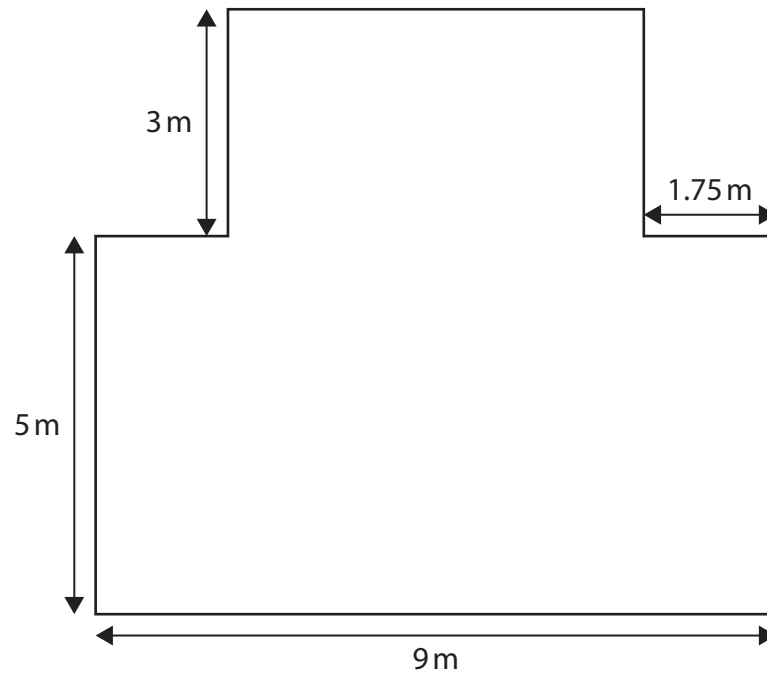


P 6 8 4 6 9 A 0 7 1 6

- 6 Steph wants to cover part of her garden with paving blocks.
The diagram shows the part of the garden she will cover with blocks.

The shape of this part of the garden has one line of symmetry.

All corners are right angles.



Paving blocks are sold in packs.
Each pack covers 10 m^2

Blocks can be cut and joined.

Work out the number of packs Steph needs to cover this part of her garden.
You **must** show your working.

(6)

DO NOT WRITE IN THIS AREA

DO NOT WRITE IN THIS AREA

DO NOT WRITE IN THIS AREA

DO NOT WRITE IN THIS AREA

DO NOT WRITE IN THIS AREA

DO NOT WRITE IN THIS AREA



DO NOT WRITE IN THIS AREA

DO NOT WRITE IN THIS AREA

DO NOT WRITE IN THIS AREA

DO NOT WRITE IN THIS AREA

DO NOT WRITE IN THIS AREA

DO NOT WRITE IN THIS AREA

(Total for Question 6 is 6 marks)



P 6 8 4 6 9 A 0 9 1 6

7 Kofi works in a snack kiosk.

Kofi has the following information about 90 items he sold yesterday.

item	number of sales
ice creams	34
hot drinks	12
lollies	

Kofi wants to draw a pie chart to display this information outside the kiosk.

Work out the size of the angle needed to represent the sales of lollies.

(3)

(Total for Question 7 is 3 marks)

DO NOT WRITE IN THIS AREA

DO NOT WRITE IN THIS AREA

DO NOT WRITE IN THIS AREA

DO NOT WRITE IN THIS AREA

DO NOT WRITE IN THIS AREA

DO NOT WRITE IN THIS AREA



8 Dionne sells comics online.

On Tuesday there were 56 orders from customers.

$\frac{3}{8}$ of the customers used vouchers when they paid for their orders.

Dionne thinks 23 of the customers on Tuesday used a voucher.

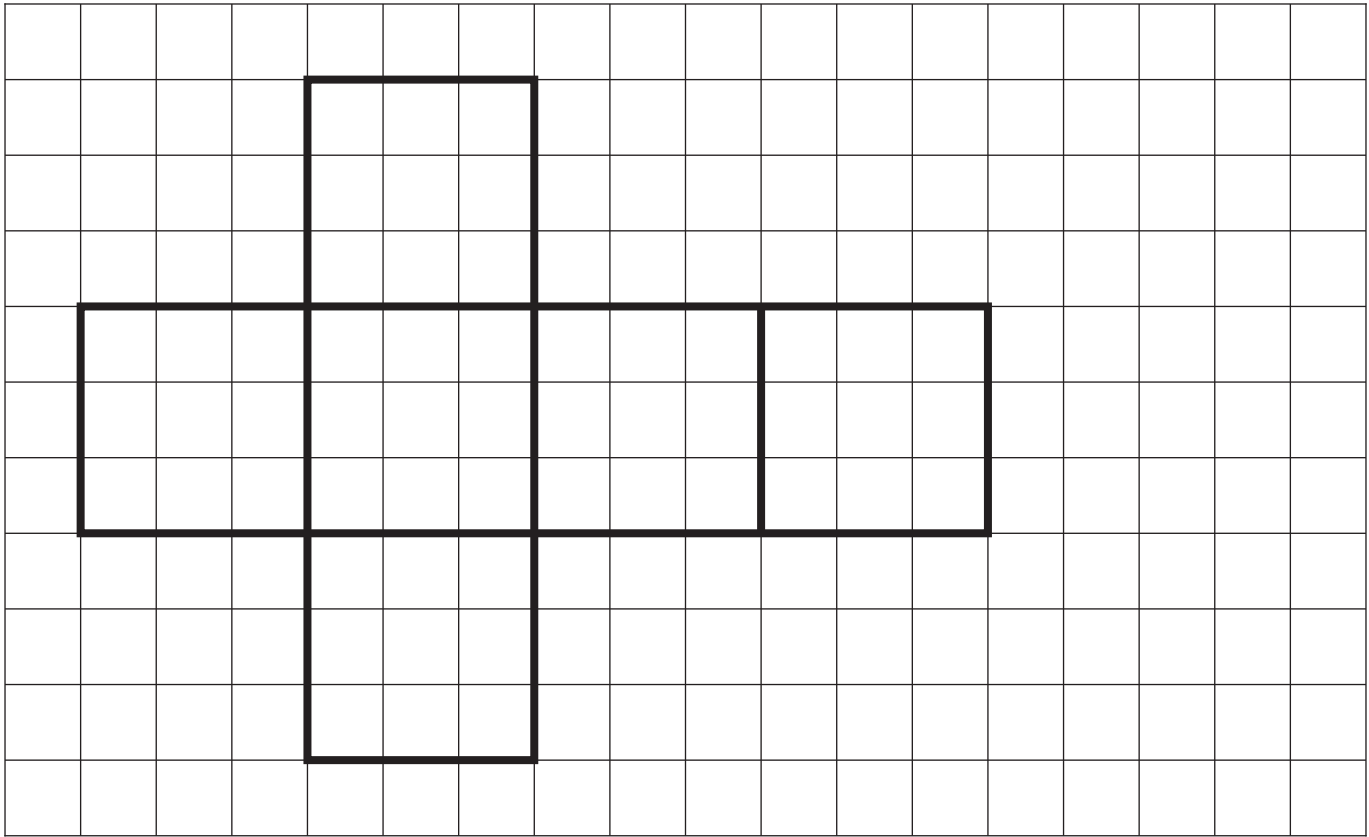
Is Dionne correct?
Show why you think this.

(3)

(Total for Question 8 is 3 marks)



9 Here is an accurate net of a cube drawn on a centimetre grid.



Work out the volume of the cube.
Remember to state your units.

(4)

(Total for Question 9 is 4 marks)

DO NOT WRITE IN THIS AREA

DO NOT WRITE IN THIS AREA

DO NOT WRITE IN THIS AREA

DO NOT WRITE IN THIS AREA

DO NOT WRITE IN THIS AREA

DO NOT WRITE IN THIS AREA



10 Charlie is planning a new room in a hotel.
He has a diagram of the room drawn on a grid.

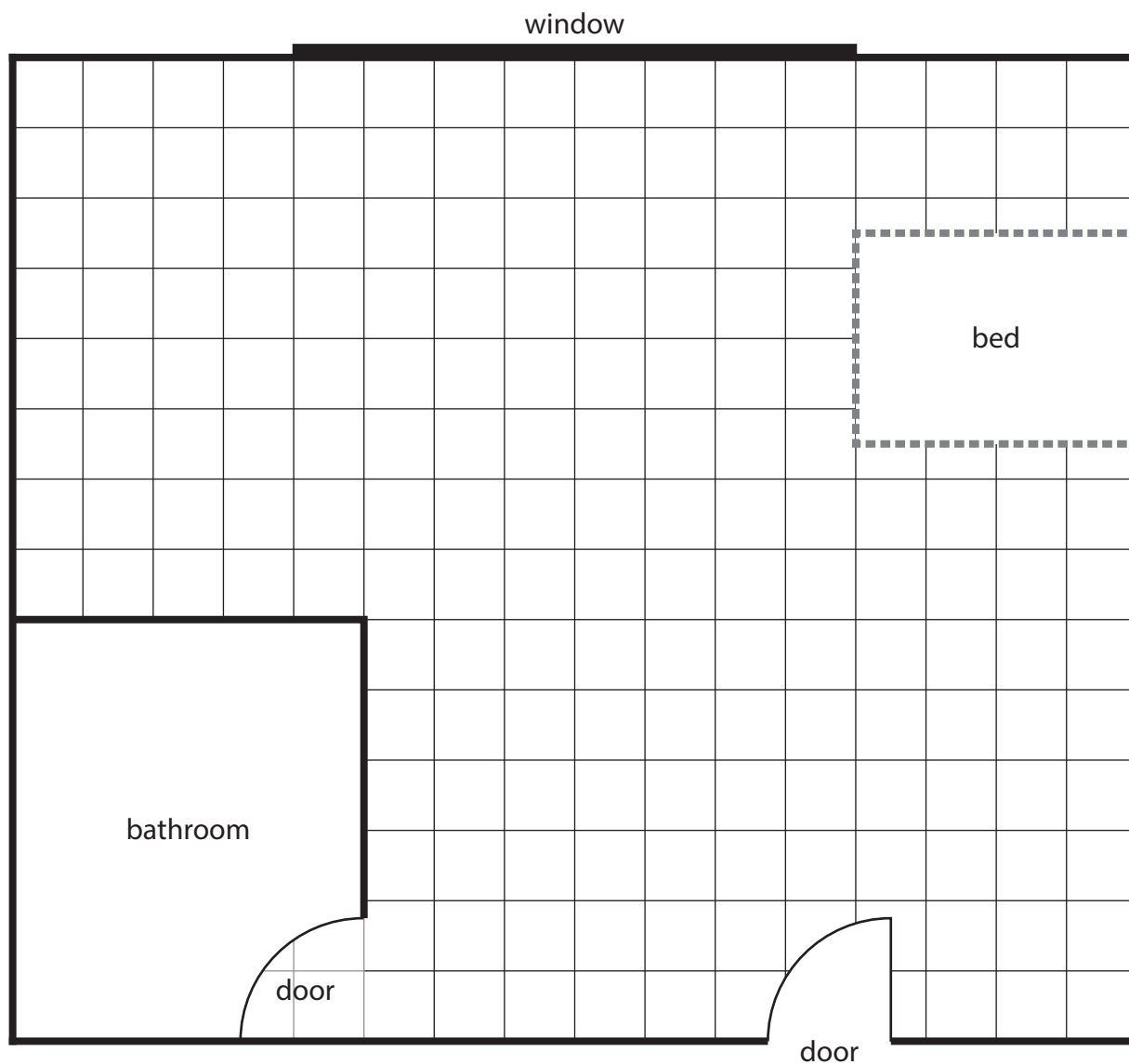
Charlie needs to show a space for the wardrobe.

The space for the wardrobe must

- be rectangular in shape 1.5 m by 0.75 m
- have the longest side against a wall
- be at least 2 m away from the doors
- be at least 2 m away from the bed.

Draw a space for the wardrobe on the grid below.

(3)



Key 1 cm on the grid represents 50 cm in the hotel room
— wall

(Total for Question 10 is 3 marks)



P 6 8 4 6 9 A 0 1 3 1 6

11

(a) Write seventy percent in figures and symbols.

(1)

Ahmed works in a museum.

Last year there were six hundred and eighty thousand visitors to the museum.

This year the museum was closed for three months.

Ahmed expects the number of visitors to be 25% less this year than last year.

(b) Work out the number of visitors Ahmed expects this year.

(4)

DO NOT WRITE IN THIS AREA

DO NOT WRITE IN THIS AREA

DO NOT WRITE IN THIS AREA

DO NOT WRITE IN THIS AREA

DO NOT WRITE IN THIS AREA

DO NOT WRITE IN THIS AREA



DO NOT WRITE IN THIS AREA

DO NOT WRITE IN THIS AREA

DO NOT WRITE IN THIS AREA

DO NOT WRITE IN THIS AREA

DO NOT WRITE IN THIS AREA

DO NOT WRITE IN THIS AREA

Blank area for writing answers to Question 11.

Small rectangular box for marking.

(Total for Question 11 is 5 marks)

TOTAL FOR SECTION B IS 42 MARKS
TOTAL FOR PAPER IS 56 MARKS



DO NOT WRITE IN THIS AREA

DO NOT WRITE IN THIS AREA

DO NOT WRITE IN THIS AREA

BLANK PAGE

