

Functional Skills
Mathematics at Entry 3

Practice Paper

Set 8

Mark scheme

Functional Skills qualifications from Pearson

Functional Skills qualifications from Pearson, the world's leading learning company. We provide a wide range of qualifications, including academic, vocational, occupational and specific programmes for employers. For further information visit our qualifications website at qualifications.pearson.com. Alternatively, you can get in touch with us using the details on our contact us page.

About Pearson

Pearson is the world's leading learning company, with 35,000 employees in more than 70 countries working to help people of all ages to make measurable progress in their lives through learning. We put the learner at the centre of everything we do, because wherever learning flourishes, so do people. Find out more about how we can help you and your learners at qualifications.pearson.com

General guidance on the use of the mark scheme

- Where the answer is a number, accept:
 - figures
 - words in any understandable spelling.
- Where the mark scheme states 'indicates', accept any clear indication, for example:
 - tick
 - cross
 - underline
 - circling
 - highlighting
- If the answer is clearly given, accept even if it is not in the answer box.
- If the answer is in words, accept any understandable spelling.
- Units can be ignored unless required explicitly by the mark scheme.
- Where a mark is available for correct money format, accept correct use of the appropriate symbol with decimal notation e.g. £28.50. Do not accept £28.5 or £28.50p or 28.50£.
- Comparing measures of length/weight/capacity at E3 (3.15/3.16/3.17): Evidence of conversion must be provided in working or in a final answer.
- Information in brackets is optional and it is not required to award marks.
- Mark crossed-out work if it is legible and has not been replaced.
- Where more than one response is indicated, award a mark only if all incorrect responses are crossed out.
- 'Valid process' means any method that is complete and correct.
- Content reference e.g. 'E3.1' shows 'level.content statement number'.
- Where the mark scheme states '1 or' and '2' marks, see example below.

	Valid working, e.g. 350 + 150 (£)500	1 or 2	
--	--	---------------	--

Candidate answer examples	Mark awarded	Explanation
500	2	No process shown, correct answer
350 + 150 = 500	2	Valid process and correct answer
350 + 100 = 500	2	Process not valid, correct answer
150 + 350	1	Valid process, no answer
350 + 150 = 600	1	Valid process, wrong answer
350 + 100 = 450	0	Process not valid, wrong answer

Mark scheme, Section A – Non-calculator

Question	Answer	Mark(s)	Content
1	Valid process to find the difference e.g. $205 - 127$	1 or	E3.2
	78 (houses)	2	E3.2
2	Valid process to find figures to compare e.g. $126 \div 3$ OR $126 \times \frac{1}{3}$ OR 41×3	1 or	E3.7
	No AND 42 (houses) OR No AND 1 (house difference) OR No AND 123 (houses) OR No AND 3 (houses difference)	2	E3.3
3	Valid process to find number of monthly payments e.g. $362 \div 32$ OR $32 + 32 + \dots$ (using 11 values)	1 or	E3.3
	11 (monthly payments) OR (£)10 (final payment)	2 or	E3.3
	11 (monthly payments) AND (£)10 (final payment)	3	E3.3
	Award three marks only if 11 is clearly indicated as the number of monthly payments and 10 is clearly indicated as the final payment		
4	Valid process to find the total e.g. 12×27	1 or	E3.4
	(£)324	2	E3.4

Total marks for Section A: 9

Mark scheme, Section B – Calculator

Question	Answer	Mark(s)	Content
1	8:25 OR 8.25 OR eight twenty-five OR twenty-five past eight	1 or	E3.13
	8:25 am OR 8.25 am OR eight twenty-five am OR twenty-five past eight am OR 08:25 OR 08.25	2	E3.12
2	Indicates South east and no other	1	E3.20
3	$\frac{1}{4}$ (turn) or equivalent fraction Accept in words e.g. a quarter	1	E3.20
4	Indicates D and no other	1	E3.19
5	33 (cm)	1	E3.14
6	Indicates 13:45 and no other	1	E3.13
7	Valid process to compare capacities e.g. 1000 – 440 OR 1000 ÷ 2 OR 440 + 440 AND 1000	1 or	E3.17
	No AND 560 (ml) OR No AND 500 (ml) OR No AND 880 (ml) AND 1000 (ml) OR No AND 120 (ml) Accept equivalents in litres Working must be shown in consistent units	2	E3.17
8	41 (m)	1	E3.6

Question	Answer	Mark(s)	Content
9	Valid process to find the total e.g. $6 \times 29.7(0)$	1 or	E3.10
	$(£)178.2(0)$	2	E3.10
	Correct £ symbol and money notation used i.e. two decimal places and not £178.20p Award this mark for correct £ symbol and money notation shown on an incorrect value	1	E3.10
10a	$(£)30$	1	E3.11
10b	Correct answer for the check i.e. $(30 \times 6=)$ 180 OR $(178.2 \div 30=)$ 5.94 Accept a valid check based on 29.70 rounded down to 29 with working shown e.g. $6 \times 29 = (£)174(.00)$ Accept correct rounding of both 29.70 and their answer to question 9 with working shown e.g. $178 \div 30 = (£)5.93(3)$ Accept a valid check using 30 but based on an incorrect calculation in question 9 with working shown e.g. $30 \div 6 = (£)5(.00)$	1	E3.5
11	Valid process to find figures to compare e.g. $134 + 193$ OR $340 - 193$ OR $340 - 134$	1 or	E3.2
	No AND 327 (alarm systems) OR No AND 147 (alarm systems) OR No AND 206 (alarm systems) OR No AND 13 (difference)	2	E3.2
12	Indicates 4.5 and no other	1	E3.8

Question	Answer	Mark(s)	Content
----------	--------	---------	---------

13	<p>Suitable y-axis title AND x-axis labels e.g. (Number of good) ratings AND O(ctober) N(ovember) D(ecember)</p> <p>Shows correct linear scale (i.e. every division has equal value) on the y-axis to cover the range of data Accept a linear scale that does not start at 0</p> <p>Correctly plots AND joins all three values i.e. 16 AND 8 AND 14 by using a linear scale to cover the range of data e.g. based on the provided grid lines Ignore extension of line before or after given values</p> <p>See answer example at the end of mark scheme</p>	1	E3.23
		1 or	E3.23
		2	E3.23
14	219 214 206 204 197	1	E3.1
15	<p>22 AND 26 OR Valid process to make comparison using 1 correct value from chart e.g. 50 – 22 OR 50 – 26 OR Indicates 24 (divisions) AND 2 (customers per division)</p> <p>Valid process to make comparison e.g. 22 + 26 (=48) OR 24 × 2 (=48) OR 50 – 22 – 26 (=2)</p> <p>No AND 48 (customers) OR No AND 2 (customers difference)</p>	1 or	E3.22
		2 or	E3.22
		3	E3.22

Question	Answer	Mark(s)	Content
16	Enters three correct types in the Type of alarm system	1 or	E3.21

<p>column e.g.</p> <table border="1"> <thead> <tr> <th>Type of alarm system</th> <th>Frequency</th> </tr> </thead> <tbody> <tr> <td>B(asic)</td> <td></td> </tr> <tr> <td>S(tandard)</td> <td></td> </tr> <tr> <td>P(remium)</td> <td></td> </tr> </tbody> </table> <p>Accept types in any order.</p> <p>OR</p> <p>Enters at least one type in the Type of alarm system column AND correct corresponding frequency e.g.</p> <table border="1"> <thead> <tr> <th>Type of alarm system</th> <th>Frequency</th> </tr> </thead> <tbody> <tr> <td>B(asic)</td> <td>7</td> </tr> <tr> <td></td> <td></td> </tr> <tr> <td></td> <td></td> </tr> </tbody> </table> <p>Frequency table completed e.g.</p> <table border="1"> <thead> <tr> <th>Type of alarm system</th> <th>Frequency</th> </tr> </thead> <tbody> <tr> <td>B(asic)</td> <td>7</td> </tr> <tr> <td>S(tandard)</td> <td>6</td> </tr> <tr> <td>P(remium)</td> <td>3</td> </tr> </tbody> </table> <p>Accept completed rows in any order.</p> <p>Do not accept tallies</p>	Type of alarm system	Frequency	B(asic)		S(tandard)		P(remium)		Type of alarm system	Frequency	B(asic)	7					Type of alarm system	Frequency	B(asic)	7	S(tandard)	6	P(remium)	3			
	Type of alarm system	Frequency																									
	B(asic)																										
	S(tandard)																										
	P(remium)																										
	Type of alarm system	Frequency																									
	B(asic)	7																									
	Type of alarm system	Frequency																									
B(asic)	7																										
S(tandard)	6																										
P(remium)	3																										

2

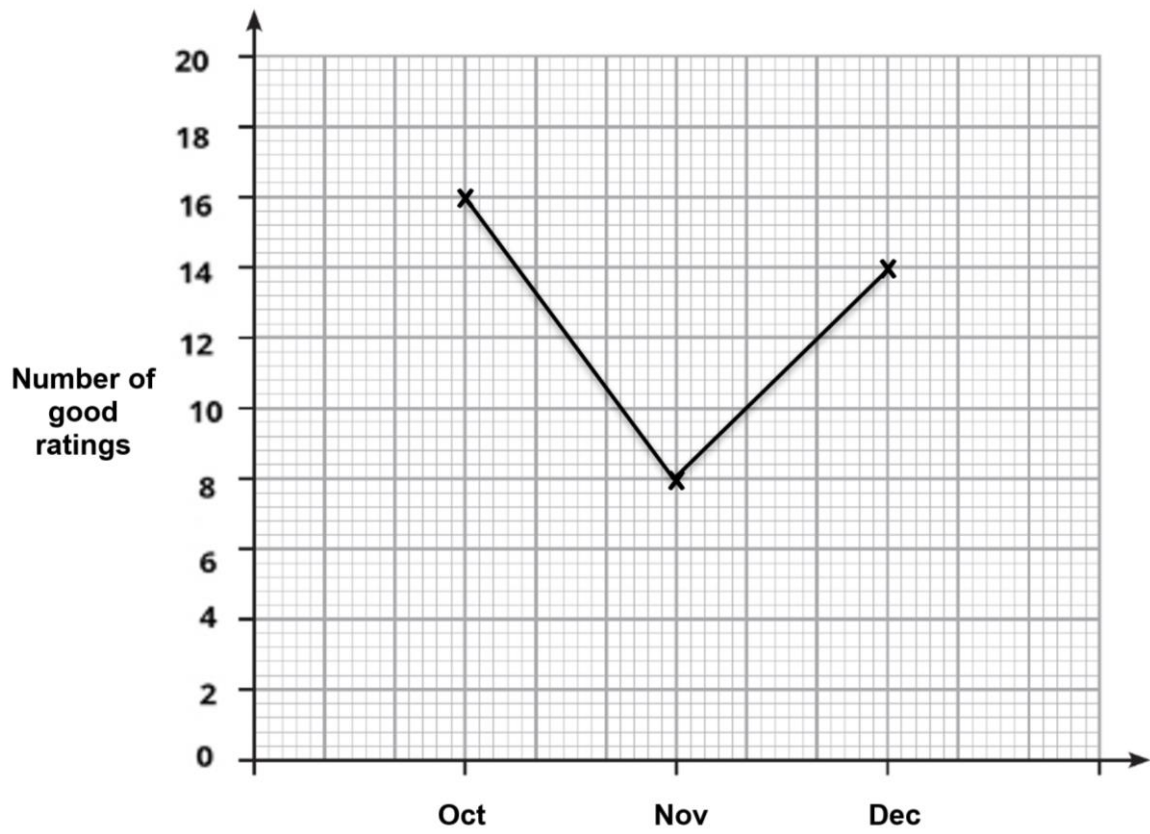
E3.21

Total marks for Section B: 27

Total marks for assessment: 36

Pass mark: 24

Example answer for Question 13



All the material in this publication is copyright
© Pearson Education Ltd 2022